

SEADOWN

VETERINARY GROUP



Tel. Hythe (023) 8084 2237

Laboratory Services

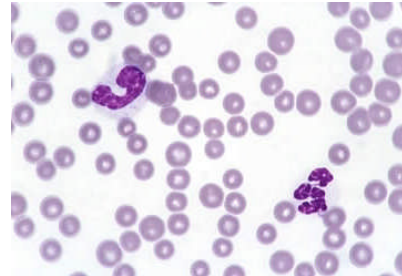
Our in house laboratory is staffed by our two Laboratory Technicians during normal working hours, and then by our 24/7 Nurse cover out of hours.



Tests include:

Blood analysis – haematology, biochemistry

Equine blood smear, showing Red Blood Cells and mature/immature Neutrophils (White Blood Cells)



Faecal analysis – Worm Egg Counts



Large Strongyle (*Strongylus vulgaris*)

Joint, tendon sheath and peritoneal analysis

Urinalysis

IGG tests for Newborn Foals

Microscopy – skin scrapes, bacteriology

We endeavour to provide a 24 hour turnaround of results in all cases, this enables us to give our clients a rapid and effective service.

**Seadown Veterinary Hospital, Frost Lane, Hythe
Southampton SO45 3NG**

Fax Line 023 80842026 Email enquiries@seadownvets.co.uk Website www.seadownvets.co.uk

R.A.Bentley, B.V.Sc.,M.R.C.V.S. P.J.Tunney, B.V.M.S., M.R.C.V.S. K.T.McMorris, B.VET.MED., Cert. V. Ophthal, M.R.C.V.S.
G.S.Moffat, B.V.Sc.,Cert GP (Eq),M.R.C.V.S. A.F. Jennings B.V.S, Cert V.Ophthal. M.R.C.V.S. and associates.